

simply
C U S T O M
by OCEANCO



*the*collection



introducing
simplycustom
by **oceanco**



Creating a custom yacht should be one of the most enjoyable experiences imaginable. It should enrich your life, inspire and energize you.

The execution of a conventional fully-custom yacht build can be time consuming. Which is why we have launched a new way to build your custom yacht that guarantees Oceanco's outstanding pedigree while streamlining the process for you, the owner. Simply spend time making decisions on what matters most to you, and leave the rest to the experts.

Available from 80m (262ft) in length, the technical foundation of Simply Custom delivers the flexibility to include what most excites and inspires you, alongside the exceptional technical standards and collaborative approach for which Oceanco is renowned. We take care of the details, so you can focus on the fun.

technical foundation



The Simply Custom technical foundation is engineered to provide world-renowned designers with a canvas upon which to create your characteristically stunning Oceanco yacht.

Delivering the ultimate onboard experience through proven technology while also benefiting from the uniquely collaborative Oceanco Co-maker approach, the Simply Custom technical foundation features a state-of-the-art, all-electrical propulsion and energy architecture system. Optimized to the most demanding operating profiles, it ensures your yacht has the right foundations to deliver high levels of operational capability and redundancy. And thanks to Oceanco's exceptional noise, vibration and seakeeping standards, you will enjoy guaranteed comfort onboard.

- FROM LENGTH OVERALL OF 80M (262FT) AND GT RANGE OF APPROXIMATELY 2,500-2,700GT
- HIGHLY OPTIMIZED AND EFFICIENT NEXT-GENERATION HULL DESIGN DEVELOPED BY LATERAL NAVAL ARCHITECTS
- FUTURE-PROOF, ALL-ELECTRICAL PROPULSION AND ENERGY ARCHITECTURE SYSTEM INCORPORATING A DC GRID AND ONBOARD BATTERY ENERGY STORAGE
- VARIABLE SPEED GENERATORS OFFERING HIGH FUEL EFFICIENCY, WITH THE CAPABILITY TO RUN ON LOW-CARBON BIODIESEL FUELS SUCH AS HVO
- HIGHLY OPTIMIZED STABILIZATION SYSTEM PROVIDING EXCEPTIONAL SEAKEEPING AND ONBOARD COMFORT
- PODDED DRIVES FOR OPTIMIZED PROPULSIVE EFFICIENCY COUPLED WITH EXCEPTIONAL MANEUVERING, DYNAMIC POSITIONING AND VIRTUAL ANCHORING
- 16.5 KNOT TOP SPEED AND 14-15 KNOT CRUISING SPEED, WITH 5,000NM RANGE AT 12-14 KNOTS
- TYPICALLY CONFIGURED WITH OWNER'S STATEROOM AND SIX GUEST SUITES, PER RED ENSIGN GROUP LARGE YACHT CODE PART A REGULATORY COMPLIANCE
- LOW EMISSION AND REDUCED NOISE THANKS TO SCR EXHAUST SYSTEM WITH CONTINUOUS DIESEL PARTICULATE FILTER OPERATION
- FORWARD HELIDECK, MAIN DECK AFT POOL, BEACH CLUB AND DEDICATED E-TOY STORAGE ROOM
- INTUITIVE CUSTOMIZATION APPROACH THAT IS SIMPLE TO UNDERSTAND AND IMPLEMENT, OFFERING SOLUTIONS TAILORED TO YOUR LIFESTYLE NEEDS AND YACHTING PRIORITIES. THESE INCLUDE BUT ARE NOT LIMITED TO:
 - WATERSPORTS AND DIVING PACKAGES
 - ENTERTAINMENT PACKAGE INCLUDING STATE-OF-THE-ART AV, IT AND LIGHTING INSTALLATION
 - ENHANCED SUSTAINABILITY VIA SMART-ECO PACKAGE
- REDUCED LEAD TIME FOR TECHNICAL DEVELOPMENT RESULTING IN A FASTER DELIVERY

FUTURE-PROOFED, ALL ELECTRICAL PROPULSION AND ENERGY ARCHITECTURE SYSTEM INCORPORATING A DC GRID AND ONBOARD BATTERY ENERGY STORAGE.

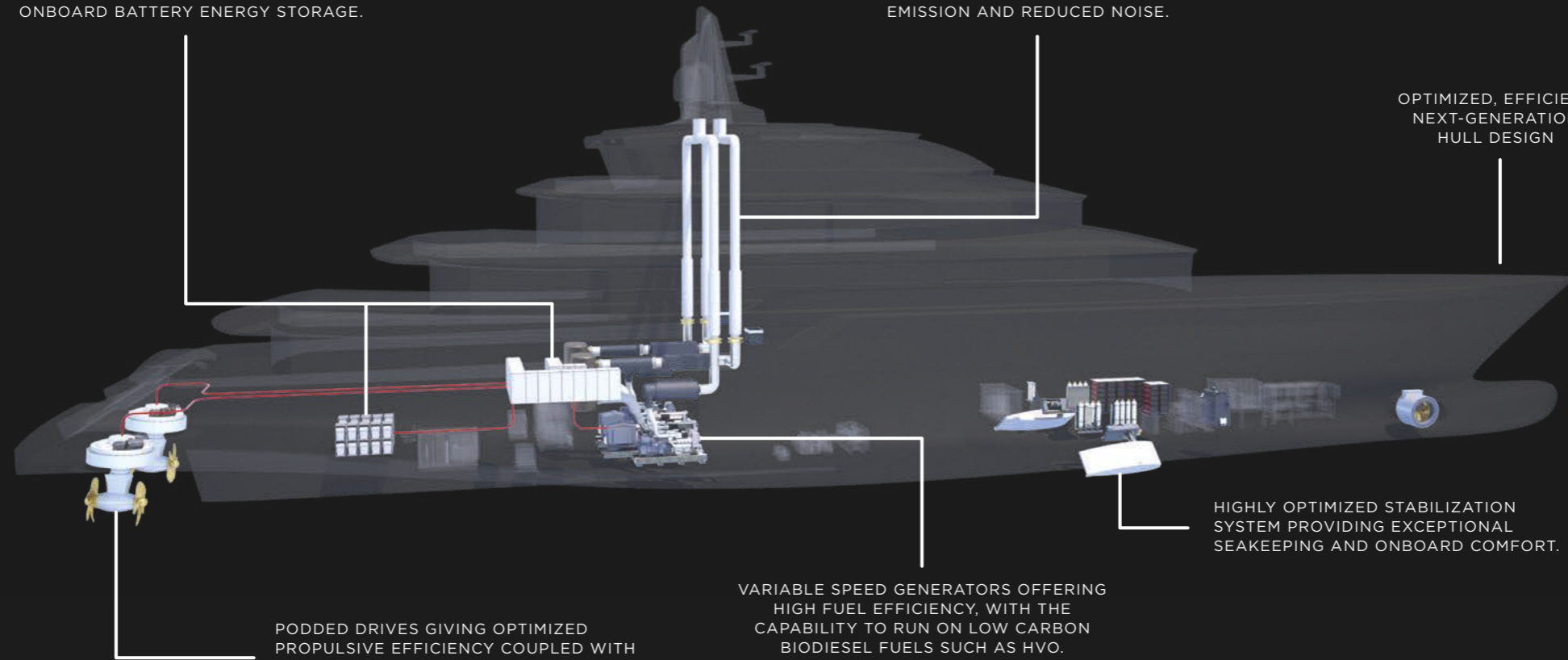
SCR EXHAUST SYSTEM WITH CONTINUOUS DIESEL PARTICULATE FILTER OPERATION FOR LOW EMISSION AND REDUCED NOISE.

OPTIMIZED, EFFICIENT NEXT-GENERATION HULL DESIGN

HIGHLY OPTIMIZED STABILIZATION SYSTEM PROVIDING EXCEPTIONAL SEAKEEPING AND ONBOARD COMFORT.

VARIABLE SPEED GENERATORS OFFERING HIGH FUEL EFFICIENCY, WITH THE CAPABILITY TO RUN ON LOW CARBON BIODIESEL FUELS SUCH AS HVO.

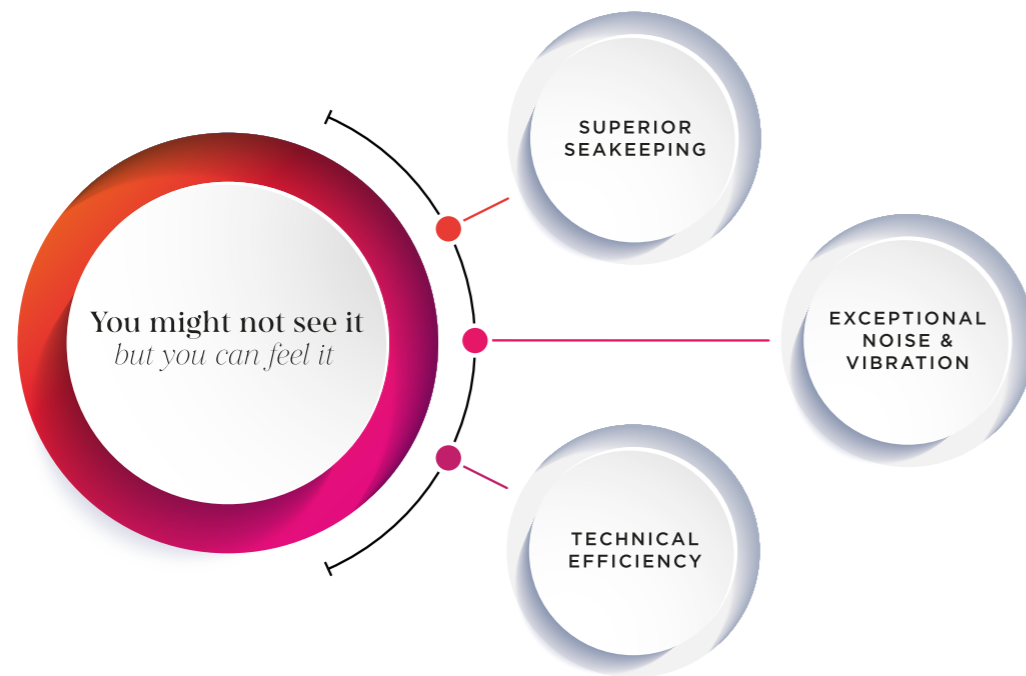
PODDED DRIVES GIVING OPTIMIZED PROPULSIVE EFFICIENCY COUPLED WITH EXCEPTIONAL MANEUVERING, DYNAMIC POSITIONING AND VIRTUAL ANCHORING.



simply *feel it*



With top technical features as standard, and flexibility built into the foundation, enjoy the freedom to take your Simply Custom yacht's design in any direction while guaranteeing Oceanco's outstanding pedigree.



// SIMPLY COMFORTABLE

We are committed to providing you with the best seakeeping possible on an 80m yacht, delivering next-level comfort. Rigorous attention to detail and collaboration with leading suppliers, such as Quantum, result in performance that is optimized for the latest stabilization technology.

// SIMPLY QUIET

As with all Oceancos, low levels of noise and vibration are central to Simply Custom. Every possible consideration is made to ensure absolute serenity in all guest areas. For example, a fully dry exhaust system places engine outlets away from guests at the waterline. Without distractions, you can focus on what matters to you most.

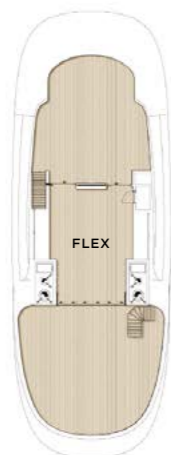
// SIMPLY EFFICIENT

At its core is an all-electric propulsion system with a DC electrical architecture. Variable speed generators drive azimuthing thrusters that deliver propulsion efficiency alongside best-of-class maneuverability, allowing for effective, safe and reliable dynamic positioning and high levels of redundancy. Meaning every Simply Custom yacht is engineered to operate in all conditions, including areas with anchoring restrictions.

A battery system can be added to enhance the power management system onboard, while the Simply Custom yachts can run on alternative renewable diesel fuels such as HVO, to reduce carbon emission by approximately 80-90% versus normal marine diesel.

And to complement the advanced propulsion system, Simply Custom's technical foundation features the next generation hull design from over a decade of collaboration and refinement between Oceanco, Lateral and MARIN.

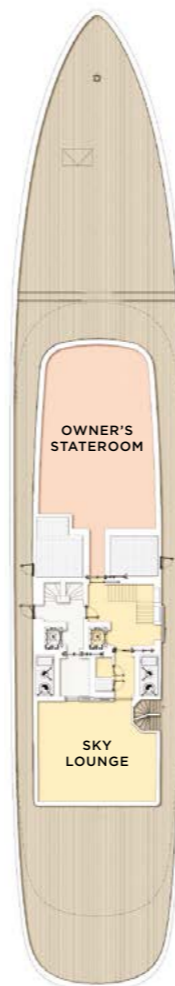
technical foundation



SUN
DECK



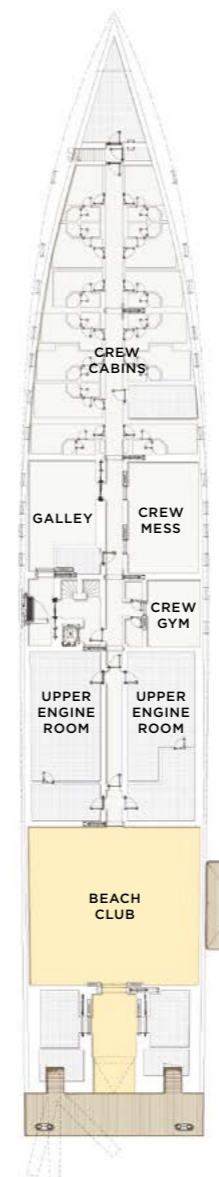
BRIDGE
DECK



UPPER
DECK



MAIN
DECK



LOWER
DECK



TANK
DECK

*the*collection



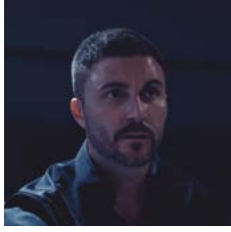
We have partnered with some of the brightest creative talents in yachting to bring you The Collection, a selection of inspiring designs to help kickstart your journey with us. The yacht designs featured on the following pages can be tailored to suit your particular needs, built on the Simply Custom by Oceanco technical foundation.

//

Aurai

// BOZCA LIMITLESS DESIGN





TIMUR
BOZCA



An embodiment of two worlds merging, Aurai is named after 'nymphs of breezes' in Greek mythology. Its exceptional exterior is influenced by the lines of a swordfish – an expression of strength – that is softened by the fluidity of natural forms, evoking a balance between power and grace. At every step, our focus has been on creating an experience that transcends the ordinary. Aurai doesn't just navigate the waves, it dances with them; offering a symphony of luxury, innovation and connection to the sea.

The visionary hull is divided into two halves, not only adding an element of intrigue but also elevating performance. The superstructure is elegantly sleek, marrying seamlessly with the hull for a harmonious and striking profile. Moving inward, the beach club serves as a testament to our commitment to immersive experiences. Every detail, from sand-like stairs to miniature gardens, captures the essence of a coastal haven. Dynamic structural elements pay homage to the ever-changing contours of the shoreline, inviting a sense of movement even when anchored.



Aurai

BOZCA LIMITLESS DESIGN



ALL RIGHTS RESERVED. BOZCA LIMITLESS DESIGN





ALL RIGHTS RESERVED. BOZCA LIMITLESS DESIGN

Aurai

BOZCA LIMITLESS DESIGN

“

Our approach revolves around an in-depth understanding of an owner's essence. We embark on a comprehensive analysis to grasp not only their dreams but also their unique character. Transforming aspirations into reality is our forte. Our yachts are not just designed; they're tailored experiences that mirror the owner's soul. Our company's vision is to introduce novel perspectives to the world of design. By harmonizing human elements, cutting-edge technology, and timeless aesthetics, we craft designs that transcend the ordinary and define the extraordinary.

”



Clarity

// ESPEN ØINO INTERNATIONAL

ALL RIGHTS RESERVED. ESPEN ØINO INTERNATIONAL



PHOTO: GUILLAUME PUISSON

ESPEN ØINO 

“

When asked to participate in designing a yacht for Oceanco's Simply Custom Collection, my team and I were inspired by one word: SIMPLE! What does simple mean? To solve a problem in an efficient, elegant and smart way.

Inspired by this definition, we went off to solve some challenges in a simple yet smart way. The yacht features very large overhangs in the superstructure to provide shade and to reduce the heat gain inside the vessel on the decks below. The excess surfaces above we used for photovoltaic cells. The main deck lounge is designed as a large winter garden, which can be opened to make use of the wind as natural ventilation. The overall objective being to reduce the onboard energy consumption and increase the renewable part of the onboard energy production. The extensive use of large shaded exterior spaces reflects our vision of enjoying life at sea and the outdoors.

”



Clarity
ESPEN ØINO INTERNATIONAL



ALL RIGHTS RESERVED. ESPEN ØINO INTERNATIONAL



“

Born in Oslo, Norway, I have been fascinated by boat design and naval architecture throughout my whole life. Since 1994, alongside my team of designers, naval architects and engineers, I have been responsible for the design and building of more than 60 yachts, some of which are considered ground-breaking.

Continuously challenging the status quo and tackling each project with enthusiasm as if it were our first, we strive for the perfect bespoke yacht for each of our clients. By engaging our clients from conceptualization to delivery and transforming a vision into a life dream accomplished, we see ourselves as partners for a journey. In the end, the biggest motivation is to design the right individual platform for someone to enjoy the oceans of the world and to have fun.

”

Clarity

ESPEN ØINO INTERNATIONAL





ALL RIGHTS RESERVED. H2 YACHT DESIGN

Storm

// H2 YACHT DESIGN



JONNY
HORSFIELD



H2 Yacht Design presents two distinctive yachts for The Collection: Firstly, we have Storm, an aggressive and sleek design that combines the elegant, flowing lines of a timeless Bentley coupe with a tapering aft end, giving that sense of speed and elegance from a bygone era.

Our second design is Portofino, named to reflect the same classic, elegant style epitomized by this enigmatic Italian fishing village. A timeless design but ruthlessly modern in her surfacing and detail, from the flared bow to the dramatically shaped transom, she oozes style.

Both designs are flexible enough to accommodate any client preferences. For example, we have two very different transom solutions: Storm has her open transom cascading to the water while Portofino has a main deck pool with access to the beach club below.



Storm
H2 YACHT DESIGN





Portofino

// H2 YACHT DESIGN



“

I established H2 Design in London to specialize in exterior and interior yacht design. Since then, the studio has grown into a widely recognized yacht design brand and we have gained a reputation for our careful mix of innovation and creativity, combined with a no-nonsense and technically competent approach.

With over 29 years' experience, we are constantly evolving and researching new ideas and products, resulting in some of the most spectacular yacht and

residential interiors and exteriors in the world today. H2 prides itself in not having a 'house style' that is replicated for each project. Because of this, our portfolio is wonderfully diverse, enabling us to work in any style the client prefers. We build a partnership with our clients, bringing them into the design process as much or as little as they prefer. Many of our clients feel extremely proud to have contributed to the design process, often getting involved far more than they had originally expected.

”

Portofino

H2 YACHT DESIGN





Superleggera 80

// HOT LAB



PHOTO: GIOVANNI MALGARINI
ENRICO COLUMINI & ANTONIO ROMANO

“

The Superleggera 80 sports sexy and elegant lines reminiscent of a 1960s automobile, while the interplay between volume and emotion onboard is intended to evoke the same sense of awe that one feels in an expansive penthouse. The architectural elements of glass, natural light and space guide you towards this sensation, providing a conduit between the interior and exterior of the yacht.

At Hot Lab, we understand that today's clients place higher value on how a space connects them to such deeper emotions, rather than simply serving a practical function. This is seen in the colossal 5m height of the Superleggera 80's main deck atrium and the clean, sweeping lines of the yacht's aft as the floor flows past the infinity-effect pool and glazed bulwark to the swim platform beneath in one uninterrupted curve.

”



Superleggera 80

HOT LAB





Superleggera 80

HOT LAB

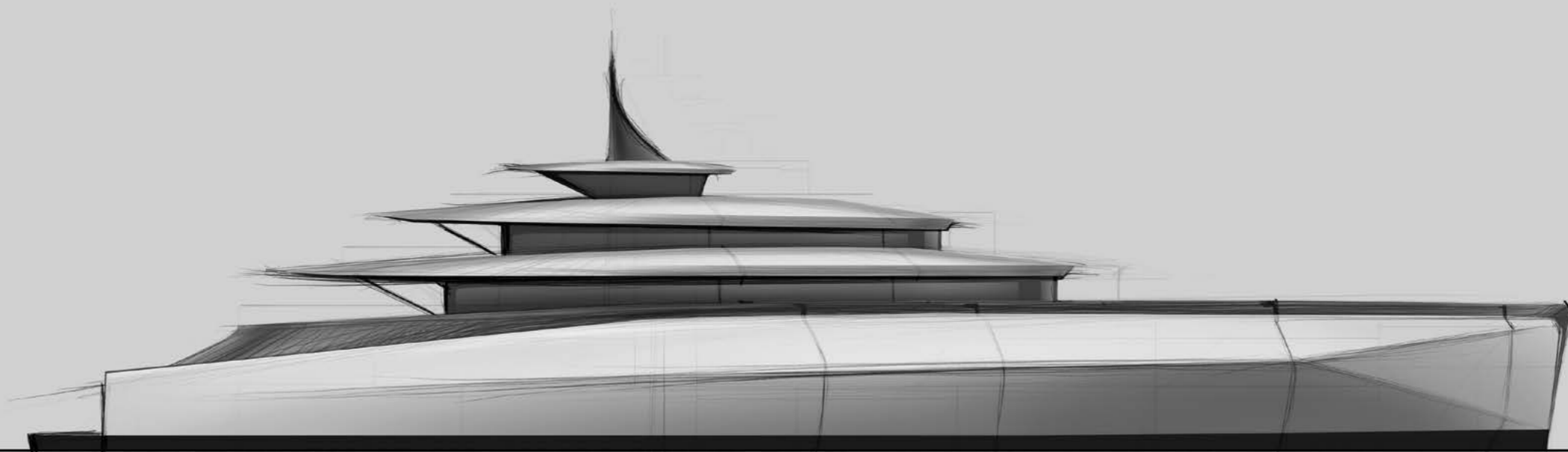
“

Our Milan-based design studio takes an architectural approach to design solutions, especially with regards to the importance of creating balanced proportions throughout a yacht. Our ethos is to provide 'architecture for voyagers', using an eraser more than a pencil in our pursuit to design timeless and elegant yachts that are contemporary but never boring.

”



ALL RIGHTS RESERVED. HOT LAB



Interstellar

// LOBANOV DESIGN

Interstellar

LOBANOV DESIGN

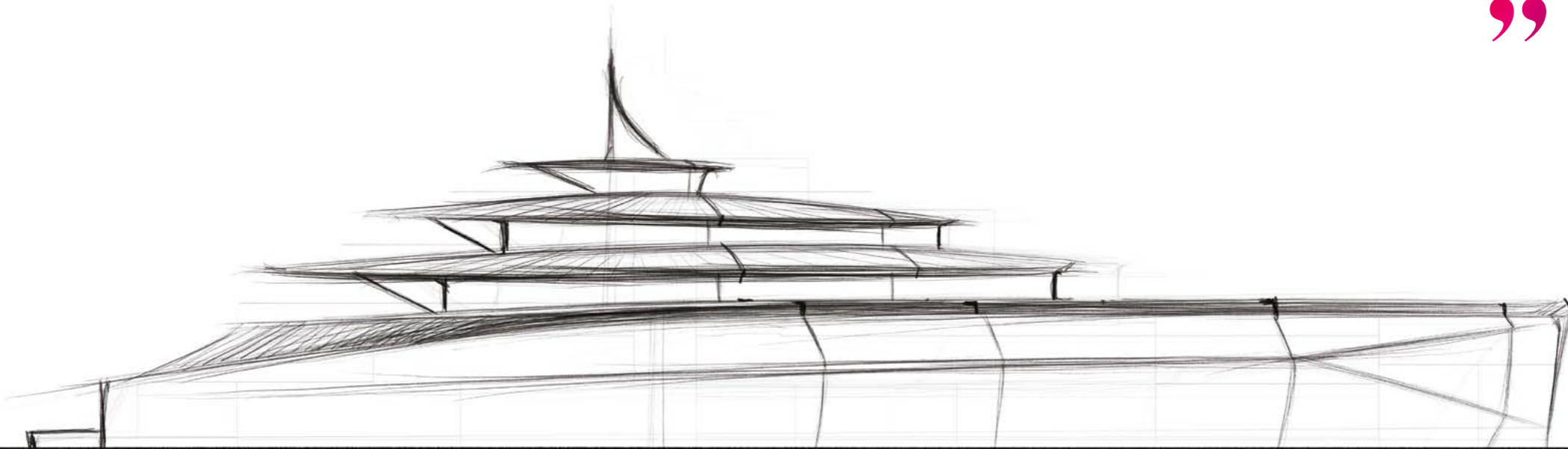


IGOR LOBANOV &
YULIA BAS



Lobanov Design is an award-winning, Barcelona-based studio for bold visionaries, looking for yacht aesthetics that reflect individuality. After degrees in Maths and Car Design, and a Master's in Transport Design, I focused on establishing a yacht design studio in partnership with my wife, Yulia Bas, who is an artist and designer. Our collaborations with Oceanco have resulted in the instantly recognizable 110m Kaos (ex-Jubilee), 85m Amore Vero (2015) and the Tuhura canoe-yacht project.

The creative process at Lobanov Design might be driven either by vivid concept vision or emerges from reflection over references and mood boards. For Interstellar, as the name suggests, we were inspired by futuristic vehicles, both real and fictional, that defy Earthly limits – used for traveling in the air, on land and in space. Sleek deck contours and sculptural bow facets embody the awe of exploration and passion for adventures.





Interstellar

LOBANOV DESIGN





© 2023 NUVOLARI LENARD SRL. ALL RIGHTS RESERVED

Domino

// NUVOLARI LENARD



DAN LENARD &
CARLO NUVOLARI



“

For The Collection, we have designed Domino. Across its layout, external form and internal style distils over 50 years' experience in the business. We believe it represents the state of the art, in terms of beauty and functionality, while also offering an owner a starting point from which to create a yacht that is perfectly suited to them.

*An owner does not **need** a yacht; they **desire** it. At Nuvolari Lenard, our responsibility is to design a yacht that, in the eyes of the owner, is the most beautiful on the water and which performs better than all others in every respect, while also retaining its value.*

”



Domino

NUVOLARI LENARD





“

On a fundamental level, I love the sea and I hate crowds; and so, the obvious consequence is that I love boats of every kind, whether motor or sailing, big or small. I like spending time in yards with yard people, and I particularly enjoy being involved at the point of a project where a concept is first conceived. When we can devise to new ideas and ensure the yacht is built exactly as we have designed her.

At Nuvolari Lenard, our approach to working with clients is simple: We listen. Whether it's about the general concept of the yacht, her layout, her style or her interior. We listen to the dreams and desires of our clients, and we help them to dream even bigger, putting down on paper what they have not yet been able to visualize clearly.

CARLO NUVOLARI

”

Domino

NUVOLARI LENARD





Pegasus

// OCEANCO



PATRICK CASANOVA, ROMAIN LE PLEUX,
THIBAUT LECOMTE & GILLES VERNHET



For The Collection, Oceanco's in-house Design presents Pegasus. Its unique design combines strength with lightness. Curved and straight surfaces blend to create soft, curved edges bringing an incredible, timeless aesthetic.

A standout feature of Pegasus is the fully-private owner's deck, providing 140sqm of interior space and the equivalent area of deck space. Flexibility of this area leaves all possibilities to match the owner's requests in terms of arrangement. This deck is topped by an exclusive owner's private crow's nest, offering a dominant view enjoyable from the sofa or the sun pad.

The exterior upper deck hosts a comfortable dining table with large buffets and sofas, and is connected to a 70sqm sky lounge that can be widely opened to enjoy the breeze. The main deck provides the main social area with a 6x5m pool surrounded by two large sun pads and lounge area with a sofa and armchairs, a bar and a table for eight guests.

On the lower deck, an expansive 75sqm beach club opens through a large shell door, offering a 25sqm terrasse to enjoy the sea view activities. A connected gym gives access to the swim platform.



Pegasus
OCEANCO







One of Oceanco's unique points as a yacht builder is our in-house creative Design team. Patrick is our senior designer, involved for over 25 years; Romain is our 3D digital designer; Thibault provides the team with 3D modelling capacity; and Gilles is the head of design at Oceanco. Just as with Oceanco's engineers and naval architects, our Design team shares the same dedication to deliver and solve challenges through a combined passion and spirit of collaboration.

When creativity meets technology and fervor, new benchmarks become possible. Our approach revolves around an in-depth understanding of an owner's essence. We embark on a comprehensive analysis to grasp not only their dreams but also their unique character. Transforming aspirations into reality is our forte. Our yachts are not just designed; they're tailored experiences that mirror the owner's soul.

Oceanco's vision is to introduce novel perspectives to the world of design. By harmonizing human elements, cutting-edge technology and timeless aesthetics, we craft designs that transcend the ordinary and define the extraordinary.



Pegasus

OCEANCO



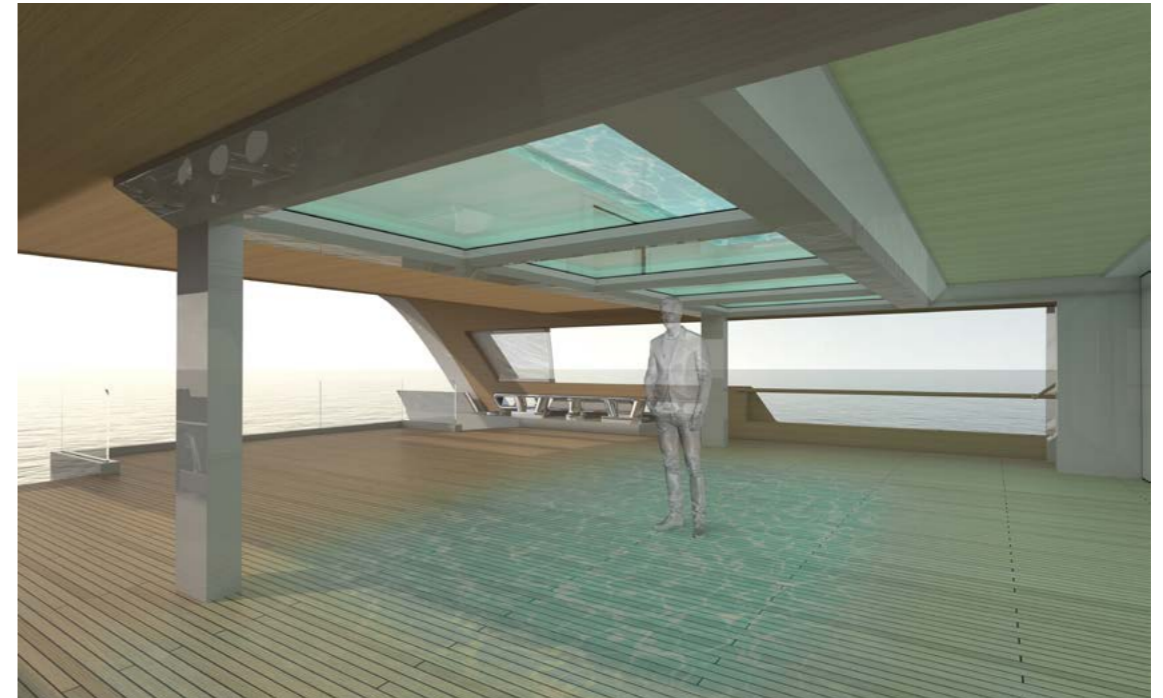


Carinae

// PASCOLI INTERNATIONAL

Carinae

PASCOLI INTERNATIONAL



KRISTIAN
PASCOLI

“

Carinae is the name of a constellation that was once part of a larger one, named Argo Navis. In Greek mythology, Argo was a ship built with the help of the gods to retrieve the golden fleece, and Carinae represents its hull.

Perhaps the most striking feature of Carinae is in fact the hull, which is dominant. We wanted to shy away from the typical deck stacking and styling exercise, therefore we decided to include the main deck in the hull. As a result, the stern is quite impressive, reminiscent of galleon designs of past eras. Further inspiration was drawn from the design of 1950s liners for the deckhouse and funnels. Finally, the Oceanco Simply Custom technical foundation fit the design well, providing a lot of flexibility as far as in/out arrangement and living spaces.

”







“

Through yacht design, I am driven to provide people with awe and excitement, and to push them to seek adventure. My work combines my greatest passions. Growing up, I spent most of my time at sea under the watchful eye of my father, who was the first Italian to cross the Atlantic Ocean, on a 7m sailboat, and competed in oceanic races like the first Whitbread Regatta. While water is my element, I was always intrigued by the technical challenges of Formula 1 designs and have also been an admirer of the architectural beauty of my childhood home, Italy. My professional fate was sealed once I crossed the Atlantic myself. The adventure was a catalyst for my drive to provide the vehicle to ultimate freedom, through yacht design.

My technical background touches on naval architecture as well as mechanical engineering and yacht design. For the last two decades, I have had the great pleasure to oversee 19 yacht projects, ranging from 60m to 156m. In 2023, I formed Pascoli International, which is based in my long-time home of Monaco.

To me, yacht design is about making a client's vision a reality, tapping into technical and practical know-how as well as emotive insight. As a creative, it is our privilege to work with exceptionally smart clients and guide them along this journey. In my view, that special and unique relationship is built on a foundation of honesty and trust, alongside a healthy dose of enthusiasm, fun and energy.

”

Carinae

PASCOLI INTERNATIONAL

SS80

// SORGIOVANNI DESIGN





SAM
SORGIOVANNI



“

For The Collection, my approach has been to provide a fundamental base that presents as a workable starting point for potential clients to refine and tune their layout and exterior profile to suit their particular needs. These personally hand drawn variations and distinct concepts provide potential clients with a comprehensive understanding of the artistic process.

I have created a range of profiles spanning from sleek and linear to speed- and strength-inspired aesthetics, and with each option emanates its own distinctive character, strength and efficiency. The different profiles serve as a visual example that there can be further refinement to align with the unique personality of any given client.

At the core of my design ethos lies a profound commitment to individuality, designing yachts that blend uniqueness, timelessness and innovation. Rather than adhering to current, fleeting fads, my goal is to provide a window into the future, incorporating cutting-edge technologies while preserving a tangible link to the present and a sense of authenticity. My approach to design seeks to achieve a harmonious balance between 'consistent uniqueness' and the authentic expression of each client's distinct personality.

”

SS80

SORGIOVANNI DESIGN





“

As a designer, I recognize the value of knowing when to embrace silence and absorb a client's brief and guidance. Equally important is the art of clear communication, carefully employed to extract the very essence and pivotal elements of a yacht from a client, allowing a design to transcend the client's utmost expectations.

I believe it is important for a designer to see themselves as a conduit, translating their client's vision into reality. We are the gears that set this creative process in motion, and so we must be humble and relinquish personal ego and aspirations. Thereby allowing a client's dreams to take center stage.

”



Aeolus 80

// TAYLOR DESIGN



Aeolus

TAYLOR DESIGN





GILES
TAYLOR



Having first designed Aeolus as a 151m yacht, for The Collection I have transposed her essence and spirit to a length of 80m. Aeolus 80 bears the same hallmark design features of her sister, namely a profound connection with the ocean including 360-degree seascape vistas throughout, an experiential escapism that enhances time onboard both for business and leisure, and an aesthetic born from nature's lines. An equilibrium between feminine curves and masculine presence is evident, while at the heart of her design is a reference to the romance of the ocean as epitomized by the J Class sailing yachts of the last century.



Having sailed from a young age, as a yacht designer I am inspired by the coastal landscapes and ever-changing moods of the ocean. My instinctive design values are very much driven by a love for purity of form and the harmonies that one often finds in nature. I am inspired by forms that have an energy; a sense of the subtle movements that serve to enhance the soul of an object. Whether the macro proportion of the yacht or her fine detailing on close inspection, I treat the creation of a yacht as a journey.



“

Taylor Design will curate a yacht's choices while refining her unique character as she emerges from the chosen sketch, in tune with the vision of the client such that the profoundness of the end result could never have been grasped from the outset.

In my career to date, my forte is to understand the mind of the pinnacle luxury customer and to deliver design statements that engage all their senses. In my former role as Director of Design for Rolls-Royce Motorcars for over seven years, I have been at the creative start point for design pieces that are never simply a means of moving from A to B.

Whether inside or out, true pinnacle luxury is to be experienced in the craftsmanship of an object. Working with the skilled craftspeople at Oceanco will guarantee a superior level of build quality, yet the Taylor Design team will bring absolute focus on materials, colors and the textures – whether innovative or classical – that will make the design simply shine among her peers. Perhaps our approach is best described by the apt quote from Henry Royce himself: "Small things make perfection, but perfection is no small thing!"

”

Aeolus

TAYLOR DESIGN





Silver Ocean

// TEAM FOR DESIGN - ENRICO GOBBI



ENRICO
GOBBI



“

We designed Silver Ocean to have a sleek, pure line with dynamic elements, so it appears to be in motion, even when still; we drew inspiration from aviation and automotive design, as well as fluid natural elements. It has an elusive look, with the overhangs in particular enhancing this perception. The profile features three character lines that emerged from our first concept sketches and which became 'slits' of light that characterize Silver Ocean at anchor.

On Silver Ocean, there is an emphasis on external spaces and the large aft decks have wide visibility, free from obstruction by structural elements. The main deck's pool features a glass bulwark to provide a clear view of the panorama from inside, so it feels like swimming in the sea. The beach club has three parts: a panoramic jacuzzi area, a central lounge and a gym. The owner's suite has a private terrace with pool and fluid stairway leading to the helipad on the bow.

”



Silver Ocean

TEAM FOR DESIGN - ENRICO GOBBI







ALL RIGHTS RESERVED. TEAM FOR DESIGN - ENRICO GOBBI

“

I have a vision that we must design the beautiful. Even if this is a personal and subjective concept, for me what's at the heart of a beautiful, winning design are the fundamental proportions, which are instantly recognizable. So our first considerations for a yacht design are not details, nor layouts, but the proportions, the volume, the idea. We could never create a beautiful yacht if this embryonic phase doesn't begin from our heart and follow our mood.

At Team For Design - Enrico Gobbi, what inspires us most are the elegant yet powerful shapes and details that we find in nature, landscapes and wildlife, like the sinuosity of a bird, the fluidity of its body shape and the power of its wingspan. The aerodynamics and timeless aesthetics of aircraft inspire my creativity, and I am continuously inspired by automotive design and architecture.

To me, it is essential we are inspired day after day for the duration of a project, from the first pen stroke on paper right up to the launch, never being afraid to take on any challenges that arise to achieve our primary goal: to create a timeless, beautiful and functional yacht.

”



Silver Ocean

TEAM FOR DESIGN - ENRICO GOBBI

Proteus

// THE A GROUP





THE A GROUP
DESIGN TEAM



Vision, authenticity, integrity and determination are the core values of The A Group, and have been our inspiration for Proteus – named after Poseidon’s son, who has the ability to metamorphosize in Greek mythology.

The A Group is an international group of gamechangers, working in the fields of yacht design, architecture and construction management. Building on Oceanco’s vision for Simply Custom, we offer authenticity to each individual design by customizing the hull basis. In doing so, the integrity of the hull is kept, allowing for a streamlined process; the client is in the driving seat, creating a yacht design that is theirs and theirs alone.

Proteus is a timeless design base superstructure for today and tomorrow. Determination is reflected in the collaborative wish of Oceanco and The A Group to evolve with our clients’ needs, in an ever-changing social and environmental climate. This fresh design and construction approach allows for owners to benefit from a unique longevity and adaptability in their yacht, without the complex and timely processes associated with a traditional custom build or rebuild.



Proteus

THE A GROUP





“

The Proteus approach offers an original design treatment that covers the base superstructure, avoiding superfluous elements and creating a proper identity to the yacht.

”

Proteus

THE A GROUP

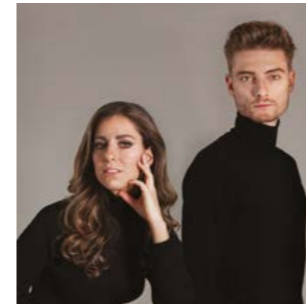
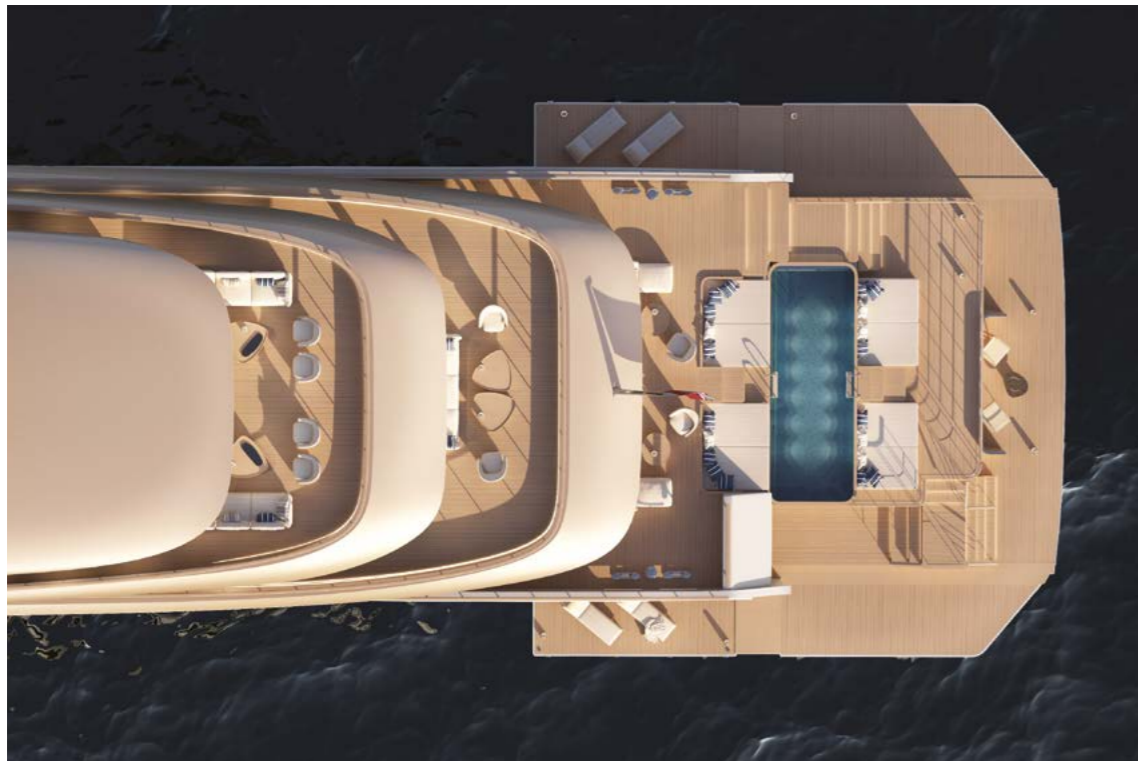




ALL RIGHTS RESERVED. THE TOUCH STUDIO

Dunes

// the TOUCH STUDIO



VERONICA VERGARI
& TIMOTHY BALDACCI



Dunes draws its inspiration from a hidden gem: the Parque Nacional dos Lençóis Maranhenses in Brazil. In this haven, the interplay of sand and water gives rise to an exceptional natural landscape, crafted by the wind's relentless artistry.

The yacht's design harmonizes the sleek and precise lines of the water's surface with the sinuous contours of the sand dunes. These curvatures, where the wind has etched its distinctive shapes, find their expression in the yacht's form, embodying the enchanting force of nature.

One of the standout features of Dunes are its aft terraces, with the option to have an entirely openable beach area that is connected directly to the sea, and with maximum flexibility in circulation. Dunes becomes one with the marine environment, and everyone onboard will feel this dual sense of freedom and connection.



Dunes
the TOUCH STUDIO







Dunes

the **TOUCH** STUDIO

“

Based in Amsterdam, the Touch Studio specializes in creating moments of life that are tailored around the uniqueness of each of our clients. Our mission is to generate emotions by realizing environments that touch your heart and leave their mark. In our designs, we integrate the uniqueness of each client, crafting small details to create a subtle beauty that goes beyond appearance, leading to 'touch' points of life.

The storytelling and narrative woven throughout each project plays an essential role in your sensory experience, fostering a profound and lasting connection to the space and the design. For our studio, 'touching' signifies much more than just design; it means 'touching your lifestyle'.

”



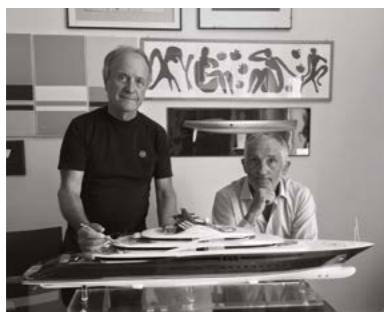
ALL RIGHTS RESERVED. THE TOUCH STUDIO



ALL RIGHTS RESERVED. VALLICELLI DESIGN

Ani

// VALLICELLI DESIGN



ALESSANDRO NAZARETH
& ANDREA VALLICELLI



“

Our design for The Collection, Ani, is built on essential stylistic signs, represented by very soft lines with highly expressive volumes. Her original aesthetic solutions combine slender shapes with very large internal spaces, resulting in a stylistic 'sweetness' and femininity. The elegance of the architectural solutions and the refined decorative elements make her a yacht aimed to inspire a strong aesthetic attraction. Her superstructure's geometries are soft while her hull shapes are very sleek at the ends, creating a slender, well-proportioned yacht that combines essential, streamlined lines with highly expressive volumes. The intentionally balanced stylistic signature, reflected in the harmonious contrasts between 'sweet' and rigid formal element, can be clearly recognized in her sheerline profile: her bow's taut sheerline becomes a concave, curved line amidships, sloping gently towards the stern, giving an overall dynamic and elegant appearance. She is a balanced yacht in which the search for beauty is rooted in the classic tradition and in the achievement of the right proportion.

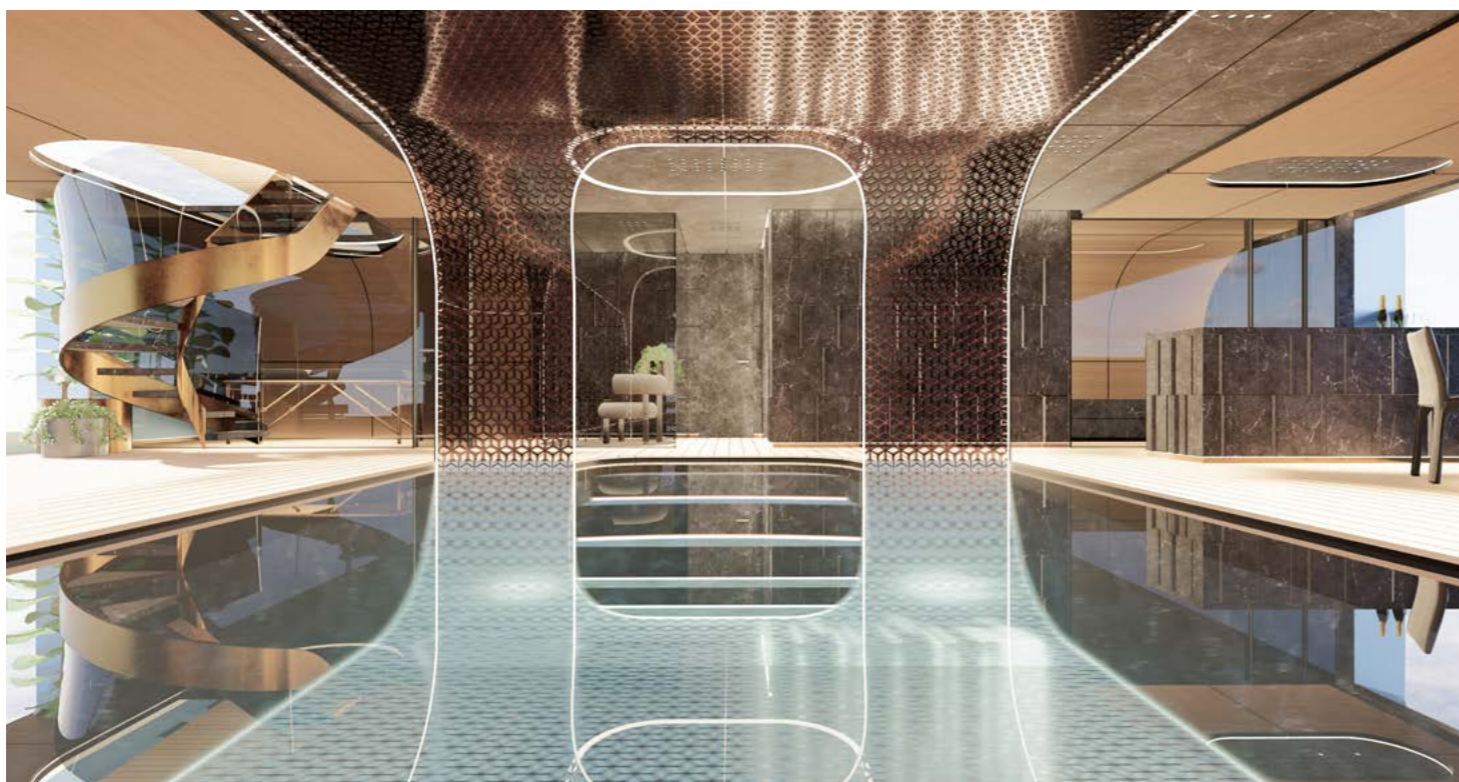
”

Ani

VALLICELLI DESIGN







“

Vallicelli Design embarked on its adventure in yacht design, naval architecture and engineering in 1976, and over the subsequent four and a half decades, more than 200 motor- and sailing yachts have been built from our designs. During this time, we have had the pleasure to work with some of the most prominent and esteemed yacht builders in the world. Our company's partners are Andrea Vallicelli and Alessandro Nazareth. Alongside his work as the company's chief designer, Andrea is a full professor of Industrial Design at Pescara University of Architecture. As well as being the chief engineer at our company, Alessandro has been a member of the Offshore Racing Congress since 1995, and he is Chairman of the International Technical Committee since 2006. With our strong backgrounds in naval architecture and sailing yachts, we are able to translate the essence of these fields to motoryacht design; namely seaworthiness, elegance and a close bond with the surrounding ocean.

”

Ani
VALICELLI DESIGN



ALL RIGHTS RESERVED. VALICELLI DESIGN



Reverie

// WINCH DESIGN

Reverie

WINCH DESIGN



JIM
DIXON

“

Reverie: 'A state of being pleasantly lost in one's thoughts or a daydream.'

Our duty as a designer is to bring purpose, inspiration and innovation in our solutions to clients' dreams. Gazing from our Thames-side studio, we see the beauty of a 'slipper' launch and the nature of the pebbled water's edge, which came together as Reverie. Simple references form lasting impressions and strong, pure concepts; this is the Winch approach.

An arrestingly pure hull and delicate sculpting of the simplest of forms, create the most elegant beauty of Reverie sitting on a calm ocean. Yet dynamic thinking and an appreciation of the fast-changing lifestyle of her owner creates a unique layout and a seamless synthesis of interior and exterior living.

”





Reverie

WINCH DESIGN



Reverie features a three-deck 'beach and wellness' experience: An expansive lower deck spa, gym and waterside access connect to a shaded aft pool. Meanwhile, a semi-enclosed main deck 'pool lounge' is designed to bring daily family pleasure to an often-underused space, conveying a lesser demand on air conditioning systems by letting interior and exterior spaces be one.

Deeper into the interior space, the owner enjoys a floor-to-ceiling panoramic view from the forward-facing master suite complete with forward pool terrace. Or, in an alternative layout, an aft master suite privately connected to an owner's lounge and the generous sun deck. While guests are comfortably accommodated in combination bedroom/sitting room suites, with a dedicated lounge to the forward upper deck.

Come onboard Reverie, where life is about sea, sustainability and socializing.



interior
inspiration



To complement The Collection, we have invited a selection of forward-thinking interior designers and architects to provide inspiration for how we might create the inside of your Simply Custom yacht.

Dasha Moranova Designs

DASHA MORANOVA



At Dasha Moranova Designs, we believe that sustainable design does not compromise on exclusivity, uniqueness and luxury. Creating environmentally friendly designs where our clients can relax and find their own tranquility is what we care about the most. We believe in innovative solutions for our designs and integration of invisible, smart technologies to benefit the everyday lifestyles of our clients.

Based in Amsterdam, our visionary design studio is comprised of an international team of passionate designers and architects. As founder and creative director of DMD, I have over 15 years' experience in the superyacht world and high-end residential and hospitality design around the globe. Our yacht portfolio spans Eclipse, Luna, Dilbar, Romea, Kibo and Alice, among others, while ashore we were a leading designer for the exclusive Raffles Hotel in Doha, Qatar.





Njord by Bergman Design House

ALBIN BERGLUND, SARAH COLBON & MARIE SOLIMAN



Njord has torn up the luxury terms on paper and redefine outdated experience codes for a generation of Njord clients who value 'living' over luxury. Our clients are looking to Njord to help unlock their inner genius ... to be the hero of their own story, to feel exceptional, individual in the design journey.

Njord is shifting the paradigm from exclusivity to inclusivity, gifting our clients knowledge and access, enriching lifestyle through design. Our clients and designs challenge and change the world of yachting. Together we inspire more to do the same.

Unapologetic creativity: *We don't play by the rules; we break them. Our team of audacious designers thrives on pushing boundaries, crafting extraordinary spaces that scream individuality and meaningful design.*

Custom craftsmanship: *Forget cookie-cutter designs; we believe in curating interiors as unique as you, your lifestyle.*





your vision. We tailor each project to your personality, so every detail embodies the essence of who you are and creates purposeful, enriching experiences onboard.

No-nonsense team: *We're not just about style; we deliver substance as people, too. Our approachable creators, seamless communications, founders and directors are always on hand. Our in-house project management of your design ensures that the vision becomes a reality, on time and always within your budget.*

Fearless portfolio: *From creating the wow factor with superyacht interiors to purposeful avant-garde hotels across the world, we've left our mark on a diverse range of sectors. Check out our electrifying portfolio – it'll make you see design in a whole new light.*

Rebels with a cause: *We're not just designers; we're rebels with a cause. As forward-thinkers, your satisfaction is our mission, and together we'll challenge convention and revolutionize your superyacht design experience.*

Sustainability without the buzz: *We mean what we say and do what we do, because we care; creating journeys of research and discovery to apply the latest alternative materials, technologies and applications that have our stamp of approval to include in your designs.*



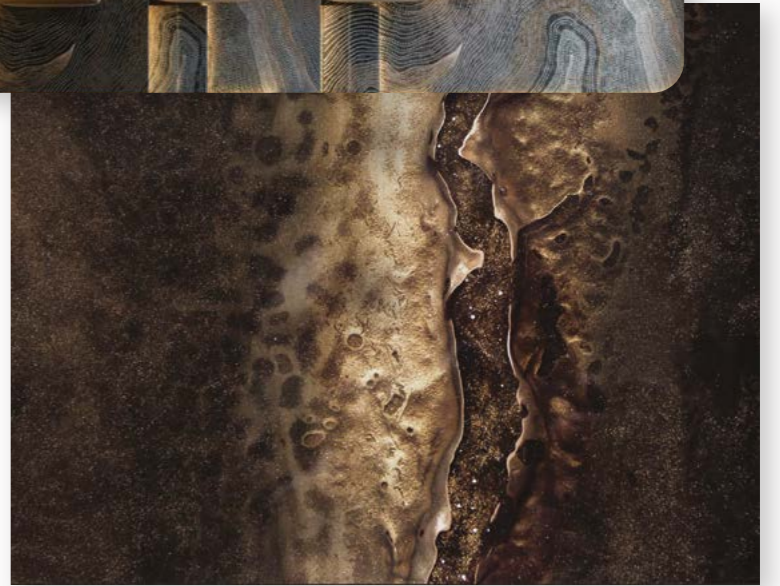
Nuvolari Lenard

VALENTINA ZANNIER



I've always considered design to be something that comes from an ancestral way of thinking about how you can transform ideas onto paper; and when I say paper, in my case, it truly is a blank sheet. The real challenge is to convert the client's vision into something harmonious and beautiful and, most importantly, buildable.

Which is why I have spent the last two decades studying and digging into what the materials that I use in my projects – from woods to stones to the most unique special surfaces – can offer in terms of performance. This helps to use design as solid bond between what you promise to the clients and what they will see when stepping onboard and taking delivery of their boat.





Studio Laura Sessa

LAURA SESSA



As a designer, it is my role to translate my clients' desires into an aesthetic style with harmony and functionality. In recent years, I have become known for my 'timeless style' and 'Sessa chic', although I have also been known to create a few classical interiors when called for. But fundamentally, my work for each client is unique.

I take inspiration from everything: books, colors, nature and even movies. I love absorbing all the details that you don't see at first glance, and I bring this into my own interiors by adding small touches that you don't see at first, but once you do you want to look at them over and over again.

An essential part of my approach is customization, to create something that you cannot buy 'off the shelf'. I like to design everything myself, from furniture to details and even fabrics, lighting and patterns. I also love to make a clever use of space, perhaps because my first student house was only 20sqm or perhaps because I started my career in yachting with the interiors of sailing boats.

For over 20 years now, I have looked to bring true sustainability into my work. I live in an area of Rome where there is no industry, surrounded by thousands of olive trees, which inspires a feeling of awe from the natural world. I am also fascinated by technology and how this can benefit our surroundings. To me, timeless design allows us to transcend 'fast fashion trends' and create pieces that provide joy for decades, before being passed on to future generations. To me, that's true sustainability.



Villa Bel Respiro, Monaco



M/Y Madsummer



Bayhouse, Monaco



Oceanco Project Time Zero



Zuretti Design

FRANÇOIS ZURETTI & SEBASTIEN GEY



Our approach to working with an owner and translating their vision into a yacht's interior design involves a meticulous understanding of their preferences, lifestyle and functional needs. By fostering open communication and collaboration, we ensure that every element of the design reflects the owner's personality while adhering to the practical requirements of a yacht's interior.

Our core value is to create exceptional interior designs that seamlessly blend luxury, functionality and personal expression, resulting in spaces that inspire and enrich the lives of our clients.

To us, the most exciting area of design development currently lies in the intersection of sustainability and technology. The integration of innovative materials, smart systems and eco-conscious practices is reshaping the way we design living spaces, promoting both environmental responsibility and enhanced quality of life for occupants.



Five Sense



Antarctica



Kerinci



Vision



Passing-Shot





our newbuild *approach*



DIFFERENT IS IN OUR DNA

You could say that delivering industry firsts is Oceanco's calling card. Since our inception, we have been privileged to collaborate with nonconformist owners and similarly ambitious partners and Co-makers, challenging the status quo.

We consistently deliver ground-breaking yachts that set new standards in design, efficiency, innovation and technical achievement. Our fleet is testament to this approach, with trend-setting projects such as *Alfa Nero*, *Tranquility*, *Aquijo*, *Black Pearl*, *Bravo Eugenia* and *Koru* exemplifying Oceanco's ethos.

We embrace meaningful innovation that is aligned with progressive thinking about how we live today and the impact on our planet, working with trailblazers from inside and outside the industry. Put simply, Oceanco builds tomorrow's yachts, today.



our newbuild approach



BUILDING FOR A BETTER FUTURE

For Oceanco, innovation and sustainability are at the core of who we are and what we do, meaning we can build a better future for generations to come. We believe that building yachts that are capable of operating more sustainably will become the norm in the coming years.

In order to build yachts that will stand the test of time, we are proactive when it comes to keeping abreast of the latest design developments and technologies relating to sustainability, often from outside the industry. Our Project Development team and our technical partners like Lateral always have this at the front of their minds, and will include sustainability as part of the earliest conversations we have with you and your team.

And we continue to invest in ways that can make our own operations more sustainable. Oceanco has pledged to more than halve our impact on the environment compared to the benchmark by 2030, aiming for 100% of our electricity usage to be supplied by renewable energy sources.

FACILITIES AS CUTTING EDGE AS OUR YACHTS

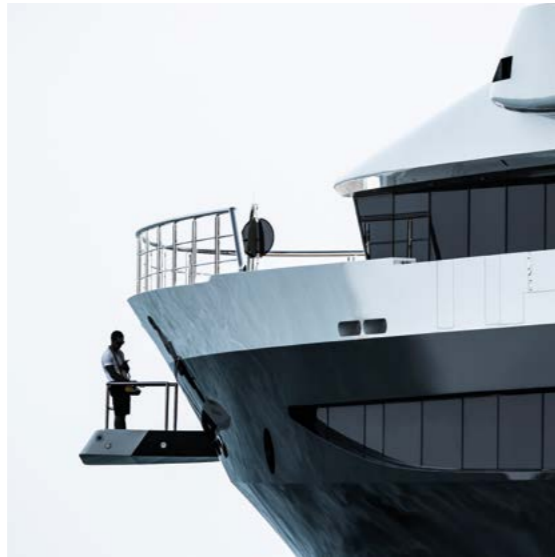
To build next-generation yachts, we need state-of-the-art facilities that are in line with our progressive approach to design, innovation and sustainability. Which is why Oceanco continues to invest in impactful emerging technologies while also increasing capabilities at our various yacht building facilities.



GUILAUME PELISSON

Our eco-efficient, state of the art headquarters in Alblasserdam has the capacity to work on multiple yachts of up to 150m at the same time, both for new builds and Life Cycle Support. There is a marina for in-water service jobs, a cutting edge dry dock and a Syncrolift, as well as access restricted zones for safety and confidentiality. The main building accommodates 2,800sqm of office space across six floors, alongside 13,000sqm of workshops adjacent to the dock. From here, yachts have direct access to the North Sea.

Oceanco's 28-acre site in Zwijndrecht is integral to our long-term initiative for growth. As well as expanding capacity for Life Cycle Support work and centralizing the Phase 1 construction of our new builds, it is evolving into a yacht hub and brain park for innovation and training. Across 114,000sqm there are separate construction and outfitting facilities, a piping shop, paint facilities, sandblasting facilities, offices and conference rooms including those used by owner's teams, yacht crews and our Co-maker partners. And this is also where our steel hulls are fabricated in-house by Mercury Yacht Construction, an Oceanco company.



lifecycle *support*



TAKING CARE OF YOUR YACHT FOR THE DURATION

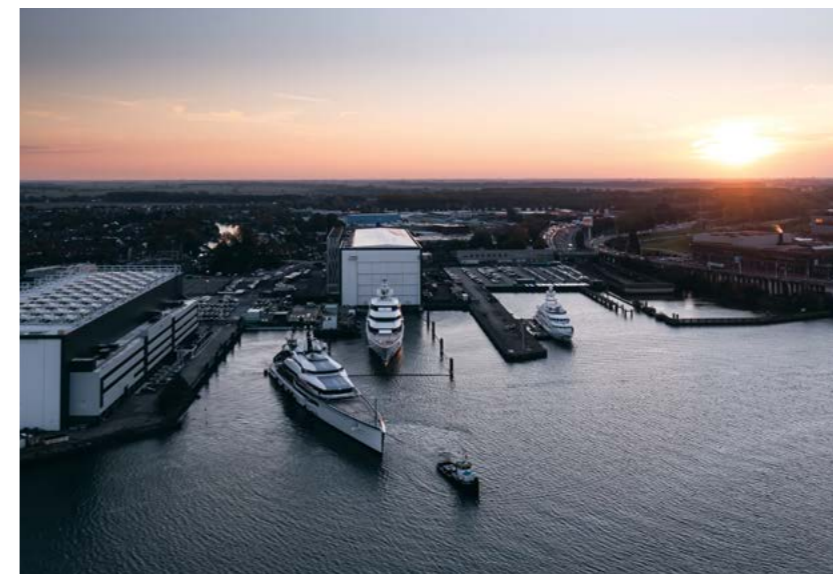
Every yacht deserves the highest quality care, not just when she is built but throughout her lifetime. We call this Life Cycle Support.

Life Cycle Support guarantees the same standard of expertise and integrity that Oceanco's clients receive for our construction projects, with a full service approach that is delivered at our state of the art facilities. The Life Cycle Support project managers and teams work alongside Oceanco's comprehensive network of key suppliers and Co-maker partners to reliably and efficiently deliver a wide range of services on time and on budget.

With advanced environmental and security controls, our outfitting facilities uphold the highest standards to assure the safety and privacy of crews, yachts and workers.



GUILLAUME PUSON



lifecycle *support*



A FULL-SERVICE SOLUTION YEAR IN, YEAR OUT

From routine refit and maintenance management to full scale upgrades and lifetime extensions, we offer assurance that a yacht will uphold the highest quality standards, whether she is part of our fleet or new to us. With many outstanding key suppliers and Co-makers based at or near Oceanco, our clients have direct access to a vast pool of talent onsite. Both at our own facilities and through deployment of rapid response teams anytime, anywhere in the world, Oceanco Life Cycle Support has our clients covered.

A LIFETIME OF EVOLUTION

With experience on some of the most challenging and innovative yacht construction projects in the world, we are not fazed by major upgrades or lifetime extensions. Our construction facilities are able to handle significant structural and technical works, so every yacht can continue to evolve and modernize as new technologies come on stream - and even become more sustainable in the process.

AN OPEN BOOK WITH NO UNEXPECTED 'EXTRAS'

We stand for reliability, responsibility and transparency. We are open and upfront about costs before a project starts, with many services falling under our monthly facilities fee, so there are no long lists of unexpected 'extras' when it comes to invoicing time.



Oceanco *news*



EVOLUTION OF AN ICON

Completed in early 2023, the transformation of *H* is one for the history books. Oceanco relished the opportunity to revisit this iconic yacht while tackling work of a novel scale and nature, recreating her to face the future as a new, contemporary vessel.

H was brought in line with modern standards in terms of technology, safety, capability and sustainability, including the rigorous IMO Tier III. The A Group acted as the independent owner's representative for the project. She now boasts a modern aesthetic, including a completely new superstructure and a fresh interior by Reymond Langton Design.



PHOTOS: GUILLAUME FLISSON

The results show the world – particularly owners of existing yachts – that there is an alternative way to create an almost completely new yacht, with the benefit of reduced wait, thanks to less time being demanded for engineering and hull construction.

The novel approach offers a win-win solution, as Oceanco Marketing Director Paris Baloumis explains: “It is our ambition that this landmark project will inspire owners of existing yachts to benefit from the gift of time while adding value to their ownership experience as well as the planet. Through this approach, today’s icons have the potential to become the new faces of tomorrow.”



AEOLUS IS SHAPED BY THE WINDS OF CHANGE

At this year's Dubai International Boat Show, Oceanco presented Aeolus. As the newest yacht to align with our Oceanco NXT initiative, she is in tune with evolving perspectives on the environment and lifestyle.

Striking an equilibrium between feminine curves and masculine presence, Aeolus's Giles Taylor-designed exterior has complementary interiors from Njord by Bergman Design House. Her decks are arranged in pod-like formations, with an owner's private oasis at the pinnacle.

Aeolus's creators have imagined a way to live better while also respecting the oceans. Her Njord interior has a strong language of introducing fully sustainable and traceable materials - including biomaterials - at her core.

Oceanco also partnered with ONE to create Aeolus Aura. Harnessing immersive technology and computer learning, this novel, life-enhancing integrated support system evolves based on an owner's needs and preferences.

In terms of sustainable technology, alongside technical partners ABB and MTU, Oceanco and Lateral Naval Architects have developed a unique Energy Transition Platform - or ETP - that can be implemented on Aeolus as a three-phase adaptable architecture to enable a future-proofed pathway to Net Zero.

"The collaboration and innovation resulting in the Aeolus design has been remarkable," comments CEO Marcel Onkenhout. "To build the yachts of tomorrow, we need to leave behind the preconceptions of yesterday. With Aeolus, I think we have achieved that."



NEW BEGINNINGS FOR KORU, SEVEN SEAS AND Y722

Oceanco's two latest yachts have been delivered to their owners: 125m three-masted schooner *Koru* and 109m motoryacht *Seven Seas*. While 111m Y722 progresses ever closer to her delivery. ↗



✎ *Koru's* name is taken from the Maori for “new beginnings”, and she has certainly lived up to it with respect to her colossal scale and technical capabilities. Not only is she largest yacht built by Oceanco to date, she is the world's largest sailing yacht and the longest yacht to be built in The Netherlands, reinforcing Oceanco's reputation for industry firsts.

Displaying a beautifully proportioned profile, *Seven Seas* is a spectacular example of graceful contemporary design. The result of a creative collaboration between Sinot Yacht Architecture & Design and Molly Isaksen Interiors, *Seven Seas* underwent an extensive optimization process, resulting in her outstanding performance and seakeeping credentials. She is also the first LY3-compliant yacht to feature a Marine Evacuation System.

In June, Y722 was transported from Oceanco's first-phase construction facilities in Zwijndrecht to our Alblasterdam outfitting facilities. From here, the remaining work will be carried out before she undertakes sea trials and commissioning in 2025. Designed by Oceanco and Espen Øino International with interiors from Mark Berryman Design, Y722 will join a select fleet of privately-owned vessels engaged in scientific research, discovery, and exploration.

LIFE CYCLE SUPPORT UPGRADES

In June, Oceanco completed a six-week Life Cycle Support refit period on 59m *Treehouse* (ex-*Helios*). Her new owners wished to make some technical upgrades and aesthetic refinements onboard. These focused on her propeller shaft seals and generators, as well as new paintwork providing a fresh, contemporary look.

In the same month, 91.5m *Tranquility* returned to Oceanco for a number of upgrades to ensure she remains at the top of her game for years to come. As one of the builder's prominent ground-breaking projects, she was the first yacht to be built to the Passenger Yacht Code when she was delivered as *Equanimity*.

A FULLY IMMERSIVE EXPERIENCE

This summer, Oceanco opened its first experience room at our Alblasterdam HQ, providing clients and industry professionals an opportunity to see a host of our collaborations and advancements together in one place. From displays of sustainable materials and biomaterials for interiors to advancements in yacht technology and energy systems, there is plenty to take in and inspire your next yacht.



index

INTRODUCTION
TECHNICAL FOUNDATION



the collection

INTRODUCTION
BOZCA LIMITLESS DESIGN // AURAI
ESPEN ØINO INTERNATIONAL // CLARITY
H2 YACHT DESIGN // STORM & PORTOFINO
HOT LAB // SUPERLEGGERA 80
LOBANOV DESIGN // INTERSTELLAR
NUVOLARI LENARD // DOMINO
OCEANCO // PEGASUS
PASCOLI INTERNATIONAL // CARINAE
SORGIOVANNI DESIGN // SS80
TAYLOR DESIGN // AEOLUS 80
TEAM FOR DESIGN - ENRICO GOBBI // SILVER OCEAN
THE A GROUP // PROTEUS
THE TOUCH STUDIO // DUNES
VALLICELLI DESIGN // ANI
WINCH DESIGN // REVERIE

interior inspiration

INTRODUCTION
DASHA MORANOVA DESIGNS
NJORD BY BERGMAN DESIGN HOUSE
NUVOLARI LENARD
STUDIO LAURA SESSA
ZURETTI DESIGN

about oceanco

OUR NEW BUILD APPROACH
LIFE CYCLE SUPPORT

No rights can be derived from any part of the information in this brochure.
This document has copyright protection. ©Oceanco V2 February 2024.

Production by Coconut Creative // Design by Supercharger Design Co.
Beach image by Agata Hepy Puspitasari

BUILT BY
oceAnco